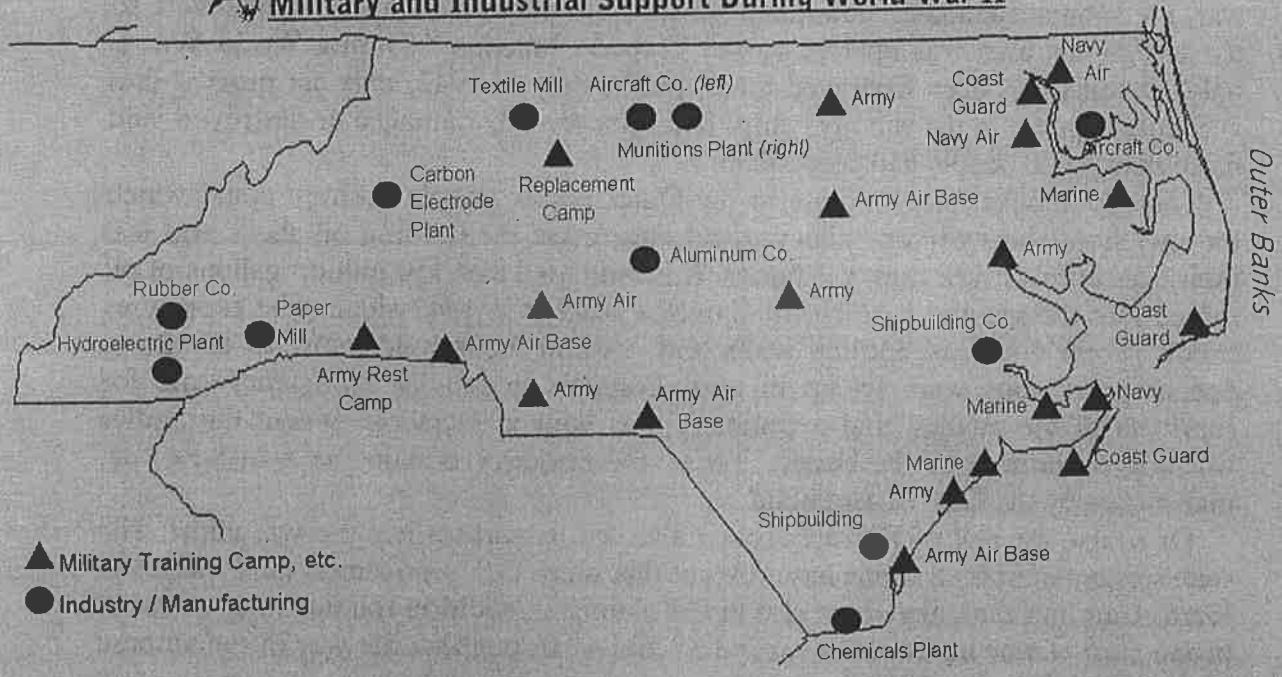




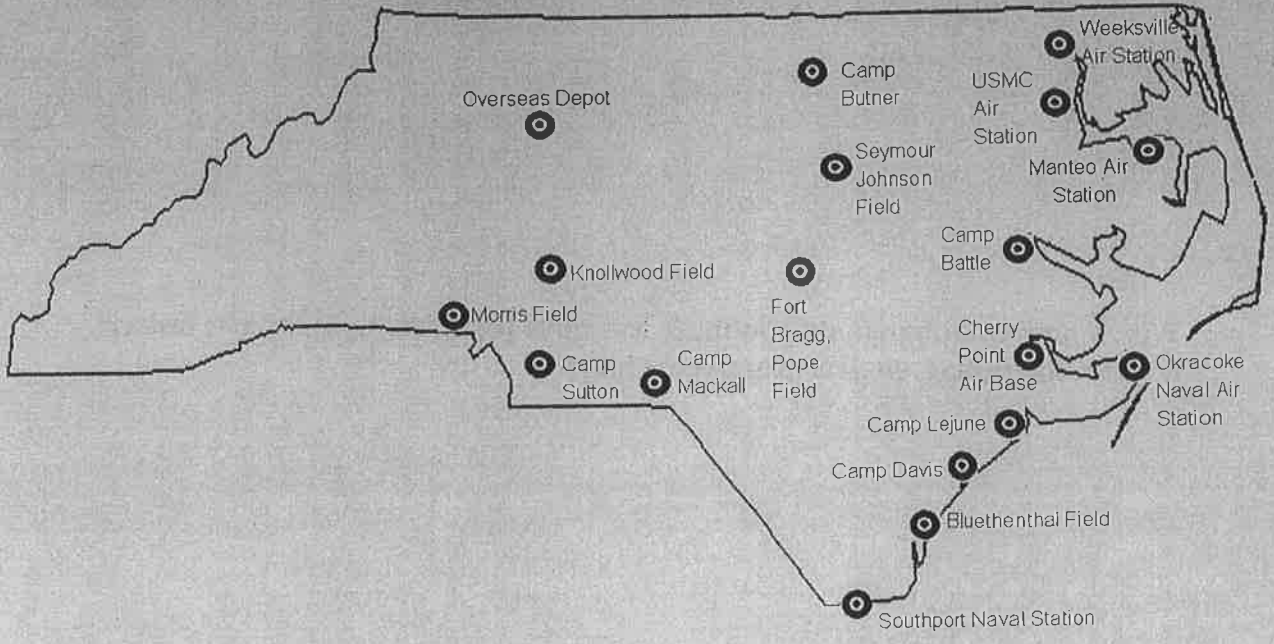
# FIGURE 4 CAREFULLY

**DIRECTIONS:** Use information from the various graphics to draw conclusions to complete your "Visual Analysis."

## A) Military and Industrial Support During World War II



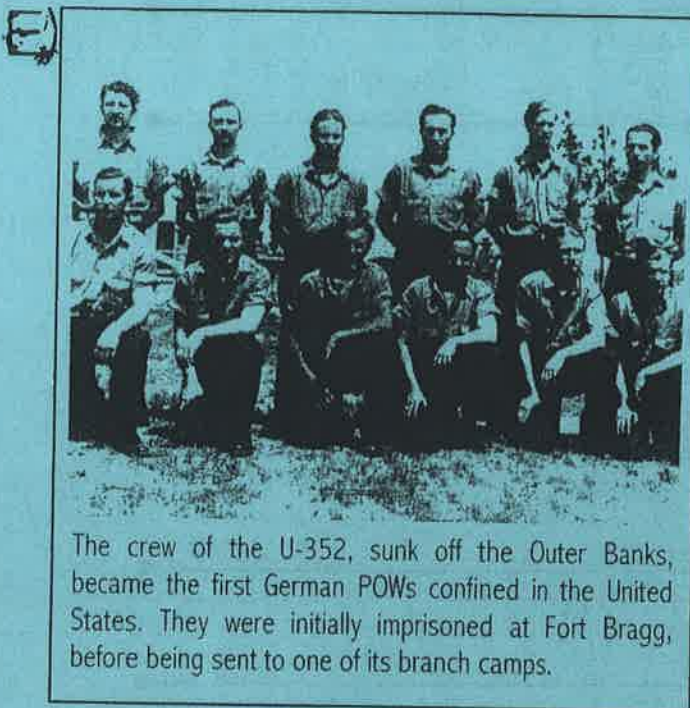
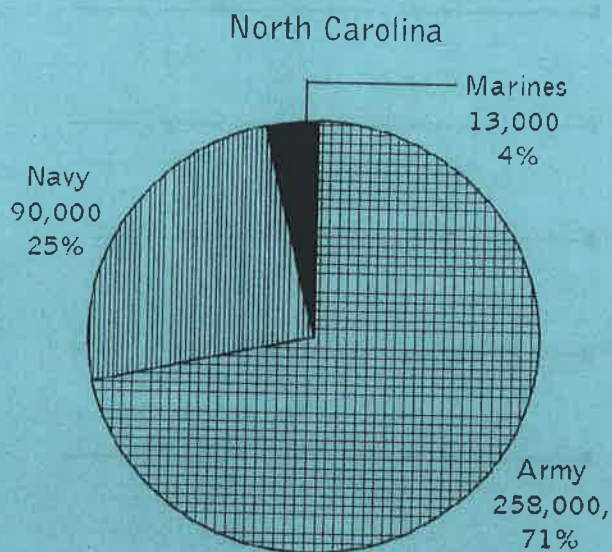
## B) Active Military Bases During World War II



**W.W. II PARTICIPATION & CASUALTIES**

	Total in Military	Casualties	Population as % in U.S. Military
U.S.	16,112,566	405,399	100%
North Carolina	361,000	8,910	2.7%

**Participation in U.S. Armed Forces by State in W.W. II**



**The NORTH CAROLINA**  
 Commissioned: April 9, 1941  
 Decommissioned: June 27, 1947  
 Armament:  
 9: 16-inch/45 caliber guns  
 20: 5-inch/38 caliber guns  
 60: 40mm/56 caliber guns  
 48: 20mm/70 caliber guns  
 During World War II, the NORTH CAROLINA participated in every major naval offensive in the Pacific area of operations and earned 15 battle stars.

**NC W.W. II BASE AND BRANCH PRISON CAMPS**

**Fort Bragg (base camp)**

- |              |                |
|--------------|----------------|
| Ahoskie      | Hendersonville |
| Camp MacKall | Roanoke        |
| Camp Davis   | Rapids         |
| Camp Sutton  | Scotland Neck  |
| Carthage     | Whiteville     |
| Edenton      | Williamston    |
| Greensboro   | Winston-Salem  |

**Butner (base camp)**

- New Bern
- Seymour Johnson Air Base
- Wilmington

# 💡 CONNECT-THE-DOTS

**DIRECTIONS:** List "facts" learned from the various graphics (**related ones, if you can find them!**), noting the letters of the information sources in the small blanks by each. Fill in from top left to bottom right, trying to keep the two rows even.

_____●	●_____
_____●	●_____
_____●	●_____
_____●	●_____
_____●	●_____
_____●	●_____
_____●	●_____
_____●	●_____
_____●	●_____
_____●	●_____
_____●	●_____
_____●	●_____

**NOW:** Study your lists and draw lines to connect **ANY** two or more facts that combined, allow you to **CONCLUDE** one or more bits of new information or form opinion(s). Explain how the facts led you to your conclusion(s).